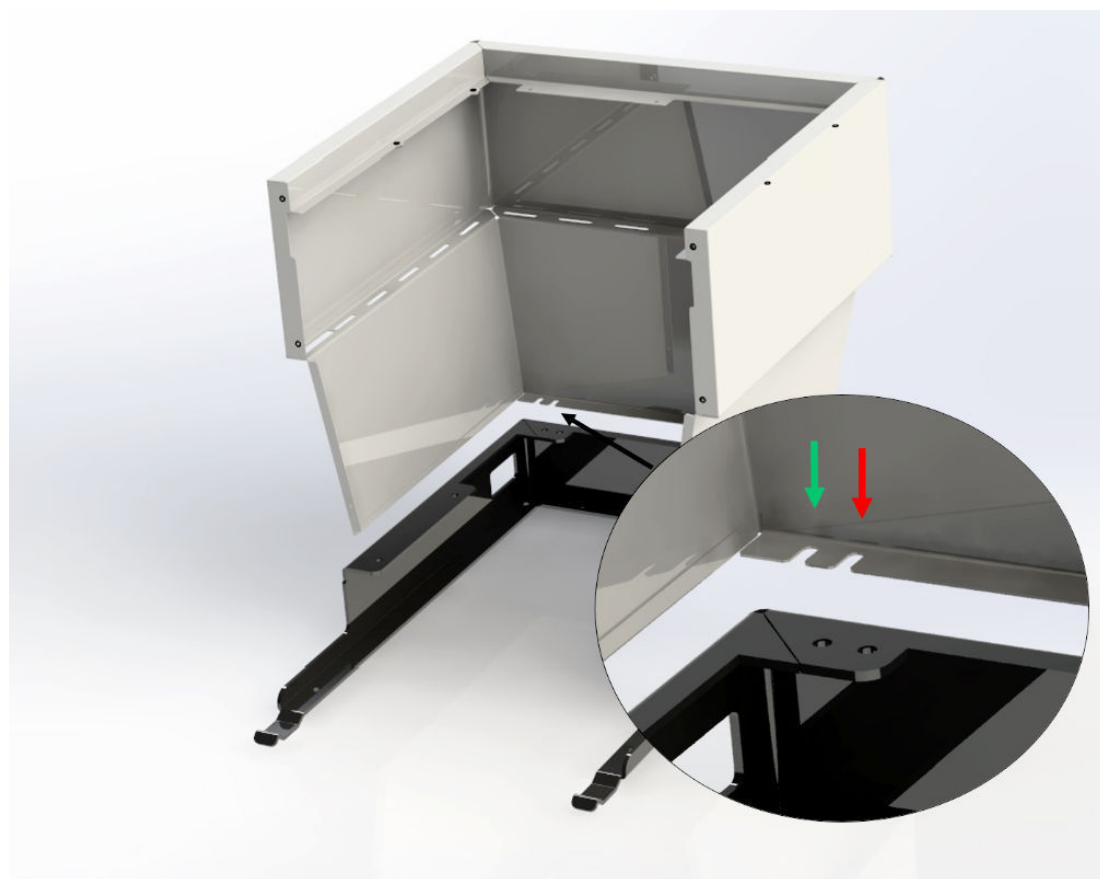


La Marzocco Technical Bulletin #127

Linea Mini Modified Frame and Panel

We are pleased to inform you that the frame of the Linea Mini has been modified in order to facilitate removing of the rear surround panel.



In order to add clearance around the pump motor, the screw position has been moved. Both the frame and the panel have 2 positions for holding the screw. This is in order to guarantee the interchangeability with previous frames or panels.

The new code of the frame is **C.1.190.01** and it equips all Linea Mini starting from serial number **LM001918**, and new panels equip all Linea Mini starting from serial number **LM002145**.



la marzocco

handmade in florence

The cover panel C.1.189 (stainless steel polished) has new code **C.1.189.01**, while painted panels (see following descriptions) maintain the same code.

C.1.189.54 LINEA MINI RED PANELS

C.1.189.60 LINEA MINI FLAT BLACK PANELS

C.1.189.62 LINEA MINI WHITE PANELS

Please do not hesitate to contact our solutions team with any questions you have about this update.

Solutions.usa@lamarzocco.com