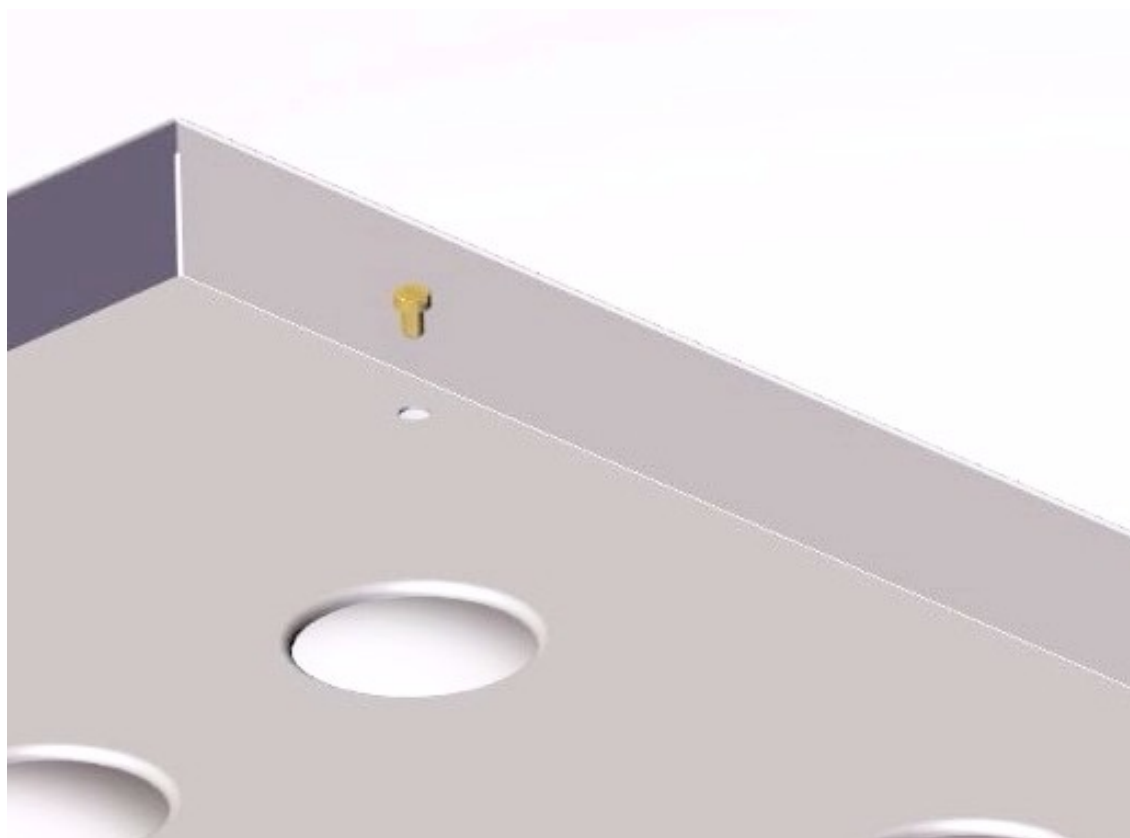


La Marzocco Technical Bulletin #124

Linea Classic Cup Tray Screws

We are pleased to inform you that the galvanized self-tapping screws, which attach the cup tray to the frame, have been replaced with M4 brass screws.



This change has been made in order to prevent corrosion of the screws which may occur if there is an excessive amount of moisture present on the cup tray.

While the code of the cup tray has not changed, screws are available with code "VITE4x8".

Please note, if you wish to replace galvanized self-tapping screws with the new M4 brass screws, you need to thread the holes with an M4 tap beforehand.

Please do not hesitate to contact our solutions team with any questions you have about this update.
Solutions.usa@lamarzocco.com