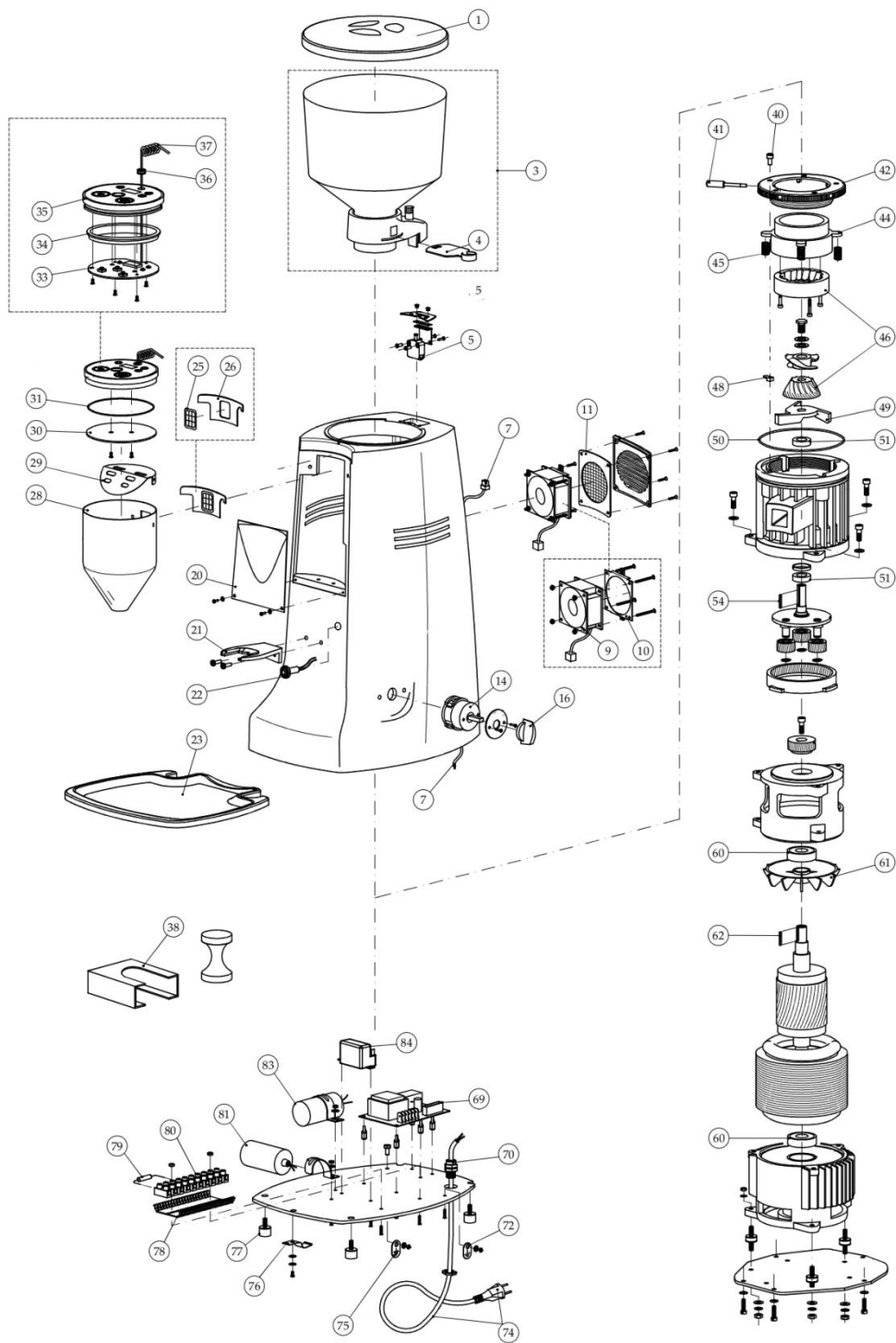


ROBUR ELECTRONIC GRINDER DOSER

EXPLODED VIEW





Position	Description	Part Number
1	Hopper Cover	M28053
3	Robur/Major Hopper, with Collar (no lid)	M28351002
4	Locking Hopper Slide	M28326010
5	Hopper Safety Switch	M28241
7	Connection Cable for Fan	M28540
9	Fan 80 x 80 Wired	M28510/R
10	Frame for 80 x 80 Fan	M28520/R
11	Filter Screen, for 80 x 80 Fan	M28530/R
14	Two Pole Rotative Switch, On/Off	M28161
16	Knob for M28161 & M28166 Switches	M28166/K
20	Motor Cover for Robur Electronic	M28500/R
21	Fork for Electronic Robur/Kony	M28122/RE
22	Pilot Light, 110V UL, Red	M28258006
23	Large Mazzer Drip Tray, Robur/Major	TRAY/LG
25	Grid / Screen Robur/ Kony/Super Jolly / Kold Electronic	M28670
26	Gasket Aer-Stop	M28400004
28	Funnel, Robur/Major/Kold	M28660
29	Coffee Outlet Guard	M28250
30	Bottom for Push Button Lid	M28650
31	O - Ring NBR70	M28680
33	Card for Push Button, with Display	M28640
34	Gasket for Push Button Holder Lid	M28630
35	Push Button Holder Lid with Display	M28620
36	Cable Locking 40-80-20 Black	M28600
37	Wire for Push Button Display	M28640/WIRE
38	Tamper Holder	M28860
40	Adjustment Collar Bolt	M28360015
41	Grinding Adjustment Disk Handle	M28360012
42	Coffee Grinding Adjustment Disk, Major/Robur	M28158
44	Upper Burr Holder, Robur	M28360030/R
45	Grinding Adjustment Spring	M28233
46	Burrs, 186C, Robur / Kold	M282186
48	Lock Nut for Grinding Adjustment Disk	M28360019
49	Lower Burr Holder, Robur/Kold	M28253/R
50	O-Ring, NB70, Seal	M30009
51	Bearing, 6202	M28057
54	3 x 3 x 30 Key	M28254
60	Bearing, 6204	M28063
61	Cooling Fan, Robur/Kold	M30019
62	4 X 4 X 14 Key	M28255
69	Board for double Timer (R, M, K, K, Mini-A Current)	M28700
70	Cable Locking HSK-K PG11 Black	M30020
72	Ground Plate	M28902

74	Mazzer Power Cable	M30022
75	External Unipotential Clamp, Plate	M28905
76	Mazzer Grounds Tray Clip	M28259
77	Mazzer Foot, Robur/Kold	M28258/R
78	Under Terminal Blocks	M28904
79	Load Resistor 68 Kilo-Ohm 2 Watt	M28710
80	Terminal Blocks	M28903
81	Capacitor 60 uF	M19058
83	Capacitor 80 uF	M19060
84	New Style, Relay for Robur Automatic and Robur Electronic.	M28346